

Pocket of sophistication

Hamton's latest development offers a range of elegant living options.

\$425,000-\$1,275,000

MALVERN

14 Elizabeth Street

Private sale

Agent Castran Gilbert, 9827 1177

Melway 59 D6



LEAFY Malvern used to be huge mansions, smaller houses and the occasional block of elegant flats but a large pocket of land in Elizabeth Street is being transformed by residential developer Hamton, which is undertaking its second project in the street.

Having completed and sold 67 apartments in MGV Malvern, a four-building development at 16 Elizabeth Street, the developer has now begun marketing the Malvern Hill development next door, continuing the redevelopment of a large, irregularly shaped site.

Malvern Hill will have 111 one, two and three-bedroom apartments over five levels. Some come with studies and many with en suites. Three-bedroom, two-bathroom apartments with two car parks begin at \$895,000, and two-bedroom, two-bathroom, one-park apartments begin at \$595,000.

Designed by SJB, who also designed MGV next door, Malvern Hill will have apartments ranging in size from 47.5 square metres to

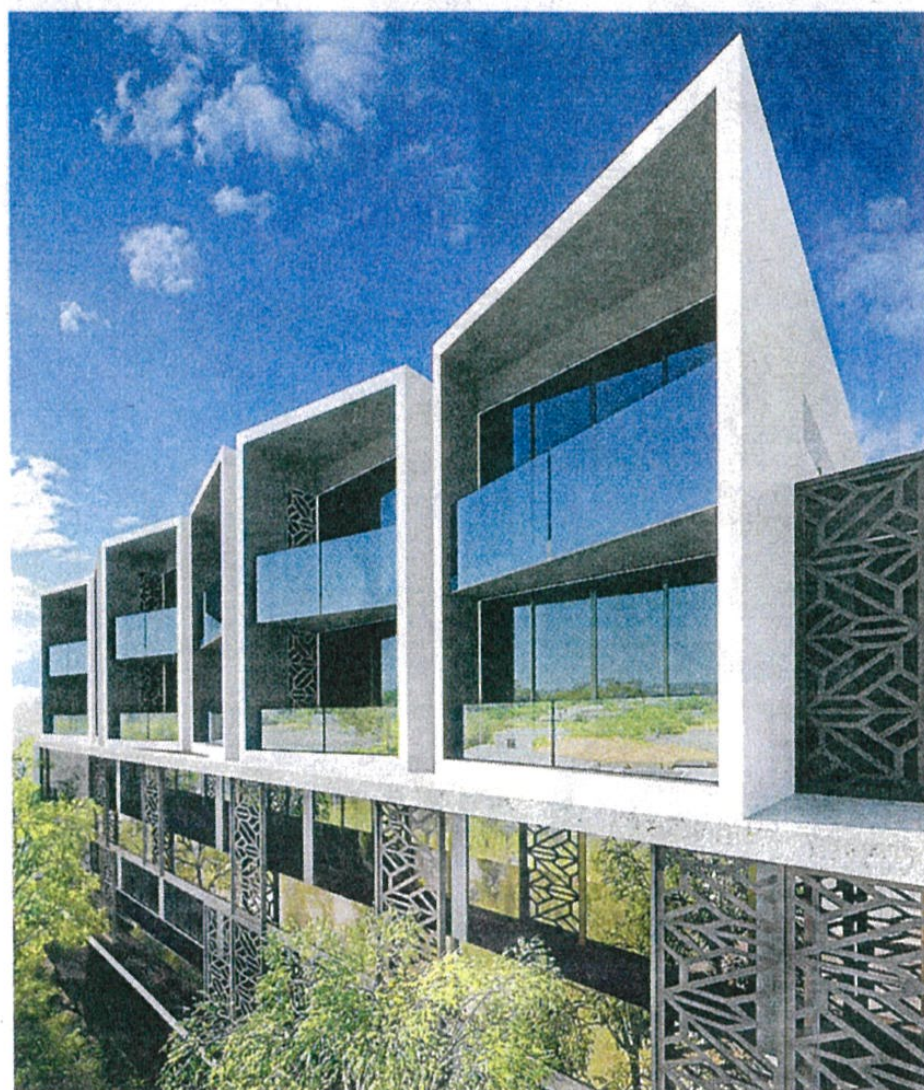
127.5 square metres and in price from \$425,000 to \$1,275,000.

Malvern Hill's design is as "now" as MGV's was when it was launched but the projects show the difference a couple of years make in architectural trends. Malvern Hill's exterior uses plenty of timber highlights, — with circular cut-outs in large areas of timber panelling — with today's version of iron lattice work adding an earthy look.

The site's many frontages - each with a different exterior look - help create smaller groups of apartments and some face the internal courtyard; others the street.

The interiors have a fairly classic contemporary look — lots of glass and streamlined surfaces — and come in either a light or dark colour scheme. The kitchens will have Miele appliances, stone benchtops and glass splashbacks.

In an elevated position with the Tooronga Valley to the east, many of Malvern Hill's apartments will



The new Malvern development has a sleek, contemporary look.

have views to the Dandenongs. Hamton has included a theatre, library and gym in the development, as well as undercover parking — including 10 visitor spaces and

29 bike parks. Castran Gilbert marketing agent Tim Brown says half the apartments have sold but each level still has a mix of sizes and prices available.